

FLIGHTLINE

NEWSLETTER OF THE PALM BEACH RADIO CONTROL ASSOCIATION



AMA Club# 1016

ONE OF THE LARGEST AMA CLUBS IN AMERICA
Summer 2022



The Palm Beach Radio Control Association Current Board of Volunteer Directors

<i>John Tice</i>	<i>President</i>
<i>John Scaduto</i>	<i>Vice President/Webmaster/Newsletter Editor</i>
<i>Princeton Rose</i>	<i>Treasurer</i>
<i>Ellen Hoffman</i>	<i>Secretary and Membership Chair</i>
<i>Joe Ramos</i>	<i>Safety Coordinator</i>
<i>Bob Rembert</i>	<i>Chief Training Officer</i>

Please use the following email address to contact any of the Directors: pbrca.info@gmail.com

Membership Meeting Dates! *ALL DATES ARE TENTATIVE*

<i>May</i>	<i>14th, 2022</i>	<i>10:00 AM at Westervelt Field.</i>
<i>June</i>	<i>11th, 2022</i>	<i>10:00 AM at Westervelt Field.</i>
<i>July</i>	<i>NO MEETING</i>	<i>Summer break, no meeting.</i>
<i>August</i>	<i>NO MEETING</i>	<i>Summer break, no meeting.</i>
<i>September</i>	<i>10th, 2022</i>	<i>10:00 AM at Westervelt Field.</i>
<i>October</i>	<i>8th, 2022</i>	<i>10:00 AM at Westervelt Field.</i>
<i>November</i>	<i>12th, 2022</i>	<i>10:00 AM at Westervelt Field.</i>
<i>December</i>	<i>10th, 2022</i>	<i>10:00 AM at Westervelt Field.</i>

For more information and upcoming events please visit the Calendar page of the PBRCA Website

<https://www.palmbeachrc.com/calendar>



John Tice – President

Hello to all our RC club members and guests. This is my first newsletter article since becoming President of our club so I thought it would be appropriate to focus on a brief “State of the Club.” It may depend on who you talk to, but I would say our club is in a very good place and possibly growing in many great ways. How does one measure a club’s health? Well, that’s also debatable but here are few key points that we should consider in looking at our club’s general health.

- Are the club fields being used and enjoyed by a variety of modelers of every age, every day? Check.
- Is Safety a priority and do we continue to improve our safety with education and guidance at all the fields? Check.
- Do we have members willing and available to volunteer to maintain and improve the facilities? Check.
- Are we reaching out to newcomers and young modelers to introduce them to the hobby? Check.
- Are we maintaining our key relationship with Palm Beach County Parks and treating the facilities as if they were ours? Check.
- Are we taking care of our finances and maintaining and planning for future maintenance and improvement projects? No doubt we are.
- Do we have an active and involved Board of Directors and communicate well and frequently? Check.
- Do we give to a variety of charities on a regular basis? Check.
- Are we having Fun? I would say yes, we sure are.

The number one asset we have is our great group of people who are consistently kind and courteous and willing to help each other out. My hat is off to all of you. Thank you and let’s keep striving to make what we have even better!

John E. Tice
President



John Scaduto – Vice President/Webmaster/Newsletter Editor

If you haven't already visited the new PBRCA Website, please do so soon:

www.palmbeachrc.com

Thanks to Joe Mannino for maintaining the website and newsletter for all the years he was at the helm.

The website has been updated with new colors, layouts, navigation, and features a home page with club and club members' photos along with some 'Quick Links.' The quick links will get you to the calendar, weather, field camera, safety rules, link to the club's Facebook page along with a photo/video page. Much of the previous content from the old site is still preserved; you will just need to click through to find whatever it is you're looking for.

We maintain the online membership renewal/join functionality and you're able to pay with PayPal or your own credit card. Of course, you can also still print up the membership form and mail it back to the club's Membership Chairperson, Ellen Hoffman with your payment.

New to the website is a separate page for our Helicopter members; the page is currently under development will be updated with information as it comes in.

As you can probably already tell, the Newsletter is also changing and is a work in progress. Joe Mannino had such history with it and was very creative that it's a hard act to follow. You will still see some repeating content but there will also be some featured highlights.

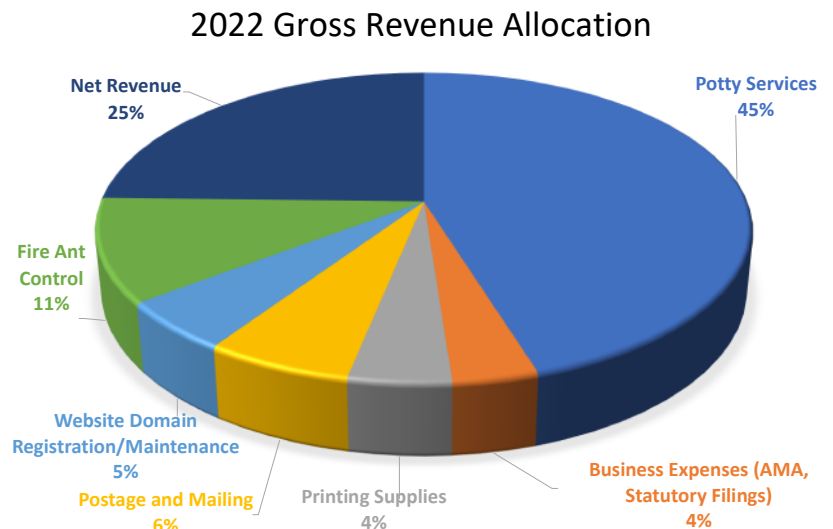
Please feel free to send me any content that you'd like to see published in the newsletter or on the website. The formats will essentially remain the same, but photos, videos, stories, etc. are all welcome.



Princeton Rose – Treasurer

At our April 9, general meeting we talked about our operating budget and the major operating expenses. I thought it would be informative to follow up with a high-level review of the club's operating expenses. As a FYI, our yearly revenue and expenses budget is straightforward and noncomplex, and each year our membership dues sufficiently cover our operating expenses.

The pie chart at right shows our expenses relative to budgeted revenue. As mentioned at the general meeting, our largest expense is for the two portable restrooms that support the runway and the heli field. This expense represents about 45% of budgeted revenue. Our next largest expense is for fire ant control representing about 11% of budgeted revenue. Other operating expenses are for the website, printing, postage and mailing, AMA registration, and for our annual federal and state of Florida corporate filing requirements. Finally, we expect that roughly 25% of our budgeted revenue will be available for capital improvements or to go towards increasing our reserves.



Last year we spent money for building and repairing worktables. We also decided against sealing our runway, which was essentially a short-term solution, and instead will focus on planning for resurfacing the runway, a longer-term solution. We plan on exploring the possibility of doing the runway resurfacing in conjunction with the county's parking lot project.

For budgeting purposes, operating expenses are assumed to increase at the rate of inflation, and we will add any planned new expenses or services, or additions to existing services. For example, late last year we extended the existing contract for fire ant control around the runway to include the heli field and that additional expense was included in our 2022 budget.

Hope you found this brief article informative and please contact me with your questions or suggestions.

Princeton
April 2022



Ellen Hoffman – Secretary and Membership Chair

Hi all. Just a quick reminder for our members, old and new; the expiration date of your PBRCA club card is directly tied to the expiration date of your AMA membership. When you get the notice from the AMA that it is time to renew, take another moment and renew your club membership. It is so simple to do right online with PayPal or a credit card, or just drop an application in the mail with a check for your dues. And remember, you can only get a two-year PBRCA membership if you have a two-year AMA card.

Our membership numbers waned a bit during COVID which was to be expected. Many people felt why pay dues when you couldn't fly? But things are looking up again. Our membership applications are starting to increase, especially new applicants. That's a great thing! In the first quarter of 2021 we had 23 new members. The first quarter of 2022 attracted 35 new members to the club. I attribute much of this to the great events that we hold. Spectators come out to see the exciting warbirds event, attend the swap meet, or bring their kids to the wonderful Intro to Flight program and decide to become involved in the hobby. Let's keep up the good work in promoting the fun!

Have a great summer everyone and continue to fly safely!

Ellen Hoffman

Club Secretary and Membership Chair



Joe Ramos – Safety Coordinator

To our wonderful membership.

New signs are being placed at the field stating that your AMA card should be displayed at all times when flying.

One will be at the Main flight gate entrance in the center, one will be at the entrance on the East end, and one will be hung in the middle of the fence at the flight box.

Please reference these signs if you should see a new person not displaying their AMA or Membership card.

As always, please be diplomatic about it and back each other up.

Have a safe and wonderful time at the Field!

Joe Ramos

Bob Rembert – Chief Training Officer

The Palm Beach Radio Control Association has instructors offering **NO CHARGE** lessons to members interested in learning how to fly radio-controlled aircraft.

If you would like to volunteer to be a trainer, please contact our Chief Training Officer.

TRAINERS ARE NOT RESPONSIBLE FOR DAMAGE TO YOUR AIRCRAFT



NEW CONTENT

“Who We Are”

Like me you have probably wondered how our club started, how long we have been in the park, and what type of entity we are. From the memories of a few long-time members, the Palm Beach Radio Control Association or PBRCA was formed when three South Florida flying clubs came together to negotiate a proposed flying site as part of the newly developed West Delray Regional Park. According to Seth Sterling, the Palm Beach Skyhawks, Gold Coast Radio Controllers, and Broward Condors who were all about to lose their flying sites, came together as one entity with one voice to work with the Palm Beach County Parks and Recreation to establish R/C flying at the park. PBRCA was formed in 2006 and got a permit to use a portion of the new park for club activities. West Delray Regional Park opened Friday, October 19, 2007, with PBRCA as one of the featured attractions of the park. According to a SunSentinel article covering the opening day events “Club members Stuart Rosenberg, Jerry Cohen, and Bucky Winokur were among those attending the dedication, prior to putting their planes with wingspans anywhere from 50” to 108” in the air to demonstrate their flying skills.”

Today, we continue to enjoy the company of “original” PBRCA members like Tommy, Seth, and Arty pictured at right.

PBRCA is a Florida registered nonprofit organization (corporation) that is recognized by the IRS as a tax-exempt organization per §501(c)(3). To be tax-exempt an organization must be organized and operated exclusively for exempt purposes set forth in §501(c)(3), and none of its earnings may inure to any private shareholder or individual. Exempt purposes include the following: charitable, religious, educational, scientific, literary, testing for public safety, fostering national or international amateur sports competition, and preventing cruelty to children or animals.



Subject to the limitations in PBRCA’s Articles of Incorporation, the primary objective of the club is to:

- foster educational and technical advancement in model aeronautics,
- give recognition to aircraft modeling leadership, and
- provide guidance and direction in model aeronautics by those individuals, who through their accomplishments in the model field, have demonstrated their qualifications.

More specific purposes are listed below, but are not to be considered all inclusive:

- To encourage, through recognition, leadership in all phases of model building and activities.
- To keep modelers informed through publication of news bulletins.
- To solicit interested organizations and individuals for support of education and development needs related to model aeronautics, etc.
- To establish and maintain official records and contests in accordance with the Academy of Model Aeronautics (AMA).

From left: Tommy was with the Condors and Seth and Arty flew with the Gold Coast Radio Controllers and the Palm Beach Skyhawks.

- To have as its Mission: “Of, by, and for Model Builders of All Ages.”

To the extent our activities align with the club’s objectives we will satisfy both the state of Florida’s corporate operating requirements for nonprofit organizations and the tax-exempt requirements of the IRS (since we would be operating exclusively for exempt purposes). In closing, we enjoy a great R/C flying club and terrific facilities thanks, in large part, to our “founders” to whom we owe a debt of gratitude.

Princeton
April 2022



Ever wonder about Dave Scott's well known "RC Flight School?"

Here's just a snip-it from the "RC Flight School" website:

<https://www.rcflightschool.com/>



R/C Flight Training Courses

Solo Course

Tuition: \$769

Description: Courses run May through September. Each class runs 5 days, Monday through Friday. Class sizes are held to 3-4 people so each person receives plenty of personal attention and instruction. We train using the "buddy" system... [READ MORE](#)

[VIEW COURSE](#)

Aerobatics Course

Tuition: \$769

Description: Aerobatic lessons are taught using the same DAS System crawl-walk-run format experienced in the Primary course to produce maximum results in the least amount of time... [READ MORE](#)

[VIEW COURSE](#)

Drone Flight Academy

Tuition: \$499

Description: Commercial Drone Flight Academy services business, media, government, and education professionals who value the importance of proper instruction toward establishing a foundation that will protect their investment... [READ MORE](#)

[VIEW COURSE](#)

value the importance of proper instruction toward establishing a foundation that will protect their investment... [READ MORE](#)

Description: Commercial Drone Flight Academy services business, media, government, and education professionals who

Tuition: \$499

Drone Flight Academy

[VIEW COURSE](#)



GOOD SPORTSMANSHIP

Park Pilot Magazine / Winter 2022

By Don Belfort

“Hi Park Pilots. I enjoy flying my models but flying with others is where I really have fun and learn. Good sportsmanship and inclusiveness can start right at your local park. You might be enjoying some flights with other pilots when you spot a lone flier at the other end of the park. Walking over to introduce yourself and inviting him or her to join you is a great way to grow your hobby.”

“My RC Pylon Racing activities have shown me the great sportsmanship that pilots exhibit toward one another to keep everyone racing. This past season, I entered a new class of glow fuel-powered models, of which I was not proficient with the starting procedure. As the starting clock ran down and I could not get my engine started, Dan Kane, the other pilot in the lane next to me, shouted, “Your fuel cutoff is on.” I corrected the problem and was ready to race.”

“After the race, I thanked Dan for his help. He replied that he wanted everyone in the air for a better race.”

National Aviation Day



Tentatively Scheduled

PBRCA will be hosting “National Aviation Day” in August 2022.

Details and specifics will be coming soon.



REGULAR FEATURES

You **MUST** have a current AMA membership card to fly at Westervelt Field. **This is a requirement of the Palm Beach County Parks & Recreation Department.**

Also, please note that we will not create your PBRCA membership card unless you have a current AMA membership card. The Club Membership form is available on the PBRCA web site, this newsletter or at the field in the press box.

Club E-mail Notifications

You should be receiving e-mail notifications for the monthly general membership meetings and semi-annual newsletter publication. If you are not receiving our e-mails, please let Ellen know (e-mail: ellenhprca@gmail.com) your e-mail address and we will update our records. If you want your name & phone number removed from our website list, also contact Ellen at: ellenhprca@gmail.com

FAA sUAS REGISTRATION

All sUAS (small Unmanned Aircraft Systems - (0.55 lbs. up to 55 lbs.) pilots must register with the FAA. Furthermore, once registered, you are required to affix your assigned FAA Registration number to the 'exterior' of **every** aircraft you fly. For more information and registration online go to:

<https://faadronezone.faa.gov/#/>

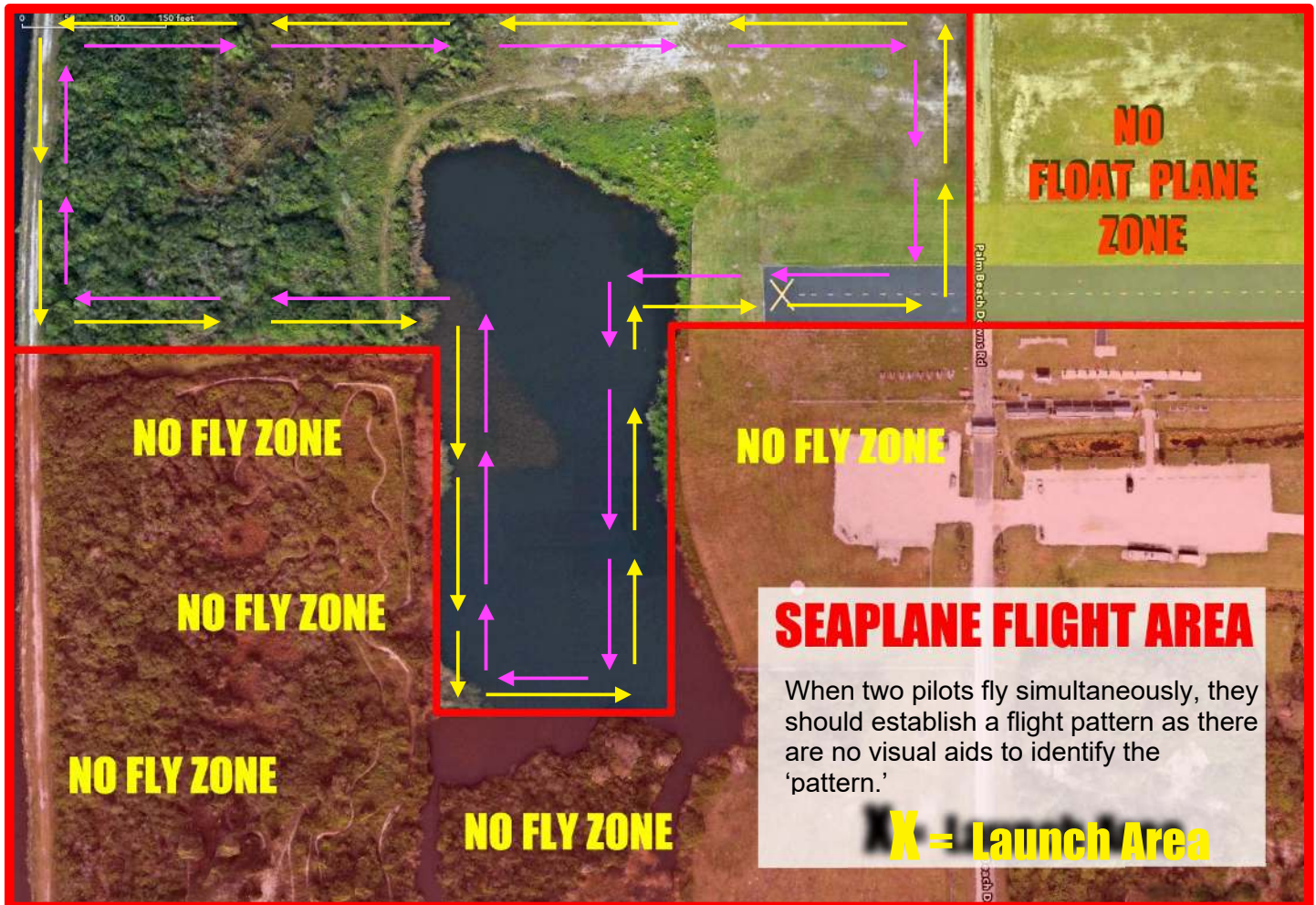
SAFETY FIRST!



As the park gets more and more popular, we are going to see more and more patrols by the Sheriff's Department. The park speed limit is 25 mph and stop signs mean STOP! Don't risk an expensive ticket by becoming complacent. Also, watch for the Frisbee Golf guys. That group seems to be getting more and more active.



Float-plane Flight Area



The membership has approved the proposed rules for flying off 'West Lake' at our May 9, 2016, membership meeting. The changes and additions are now incorporated into our Safety Rules as Revision K (rev.k).

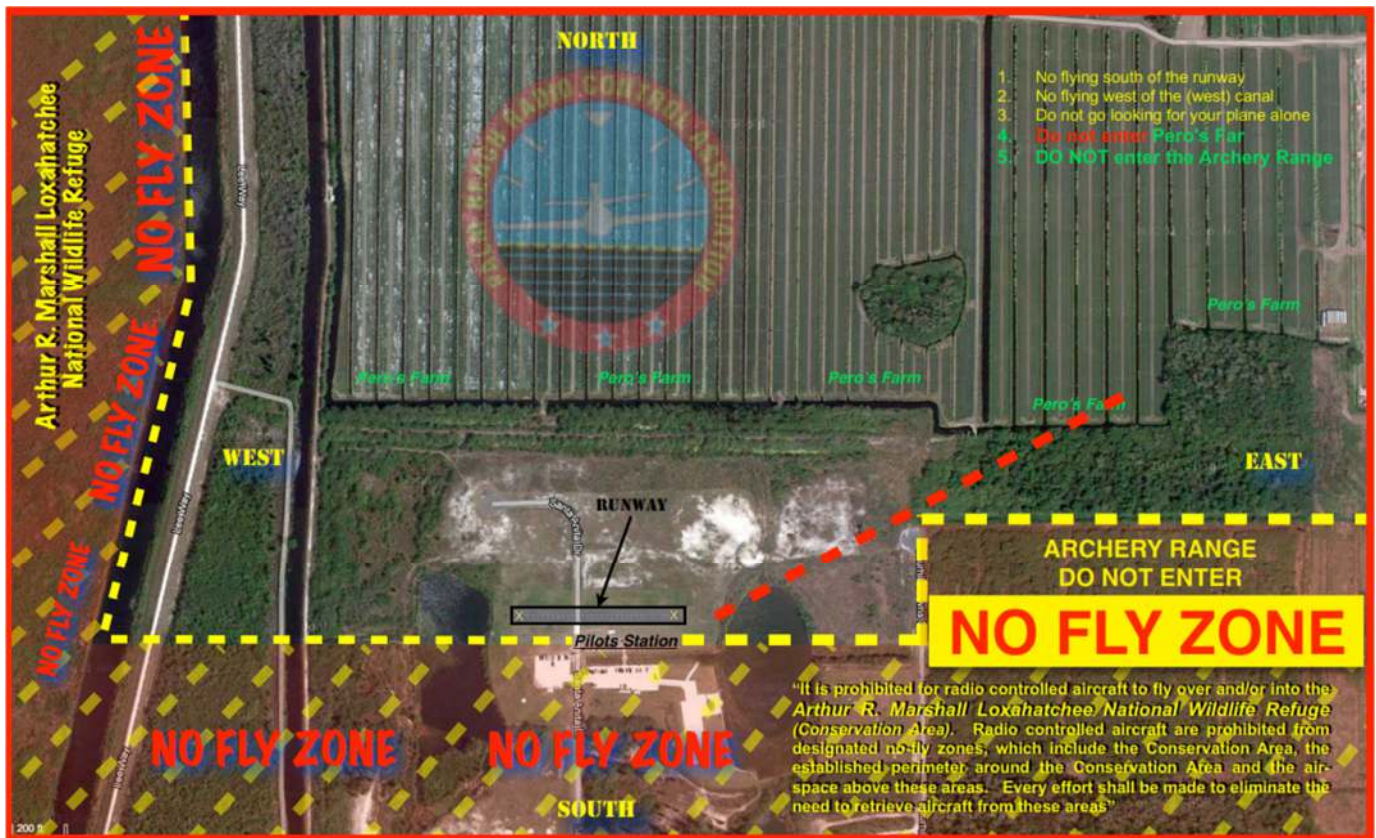
The revised safety rules and the map have been posted on the window of the press box and on our website, and can be accessed at:

https://www.palmbeachrc.com/files/ugd/e50535_48e41b68e210474aa92c5af389be5d8c.pdf



Land-based Flight Area

Palm Beach County has previously established “flying” boundaries and we need to adhere to those restrictions. This is an aerial map showing the boundary lines for West and South flying and it is also posted in the bulletin board located at the “impound.” Our club has already been warned about flying over the Everglades by a Federal Wildlife Officer. You must fly within the designated boundaries!





**Hats and shirts are available
for online ordering!**



Pick your size and color and have it delivered to

SEWBUSY.COM

your door!





THE RECREATIONAL UAS SAFETY TEST (TRUST)



Dear valued AMA member,

When the FAA Reauthorization Act of 2018 was signed into law, it included a requirement for [recreational UAS users](#) to pass a knowledge and safety test. The Recreational UAS Safety Test, or TRUST, has the goal of increasing awareness of safety and best practices in the most complex airspace system in the world. AMA has worked closely with the Federal Aviation Administration (FAA), ensuring that TRUST meets the intent of Congress without placing an undue burden on our hobby community. AMA has been there to help make decisions regarding guidelines, administration, and questions included on the test.

Since 1936, the AMA has been dedicated to the hobby of model aviation, educational programming, and safety in the airspace. As such, the FAA selected AMA as a test administrator for TRUST.

What can you expect from TRUST? First, AMA is offering it for free for all recreational fliers. But don't worry, it is more like a brief training session than a test, because you can't fail!

There is some information to read that deals with flying safely and legally, along with 23 multiple-choice questions. If you select an incorrect answer, you'll be guided to the correct response until you get it right. After you finish, you'll receive a TRUST completion certificate that you should print, save electronically, or take a photo of with your phone. This certificate is proof that you passed, and you will only have one opportunity to save it. To protect your privacy, the FAA dictates that taking the test is anonymous and no record is kept by anyone other than you, so losing your certificate means you need to retake the test.

More information about TRUST can be found at www.modelaircraft.org, including frequently asked questions. We're here to ensure that you can quickly pass the test and potentially learn something new as a recreational pilot. We even have a quick tutorial you can look through to get an idea of what you'll need to know. It will allow you to get through TRUST quickly and easily, allowing you to prove that you are a safe and knowledgeable pilot. Learn more at MODELAIRCRAFT.ORG/TRUST.



www.palmbeachrc.com



This application is a two page membership application and you must submit both pages with the waiver **SIGNED (located on the next page).**

The Palm Beach Radio Control Association **MEMBERSHIP APPLICATION & RENEWAL FORM**

FIXED WING
 ROTARY
 MULTI-ROTOR
 TURBINE
 STUDENT

Please select **ONE** category based on your current flight status ! **NEW PILOTS**

I hereby apply for membership in the Palm Beach Radio Control Association, Inc. I understand that I must first be a member of the Academy of Model Aeronautics (AMA) or that I must apply for membership prior to submitting this membership application.

Academy of Model Aeronautics (AMA)
 5151 E Memorial Drive,
 Muncie, IN 47302
 AMA: 1-800-435-9262

IMPORTANT: You must have a current AMA Membership in order to fly at Westervelt Field and receive your new or renewal PBRCA membership club card.

PBRCA DUES INFORMATION:

- Annual dues per person \$35.00
- 2 Year dues per person** **\$70.00**
 (You must have a 2 year AMA Membership)
- Annual dues under 18 years old \$15.00

Membership Benefits:

Club newsletter, club website, club meetings, use of club maintained grass & blacktop runway, lake flying, pit area tables, benches & canopies, free flight instruction (dependent on availability of volunteer club instructors), participation in club contests, fly-ins, picnics, shows and raffles.

PLEASE PRINT THE REQUIRED INFORMATION CLEARLY

First Name ** Last Name ** Initial	AMA Membership Number **
Street Address **	FAA Registration Number **
City ** State ** Zip Code **	AMA Turbine Waiver Number
Home phone number with area code	Emergency Contact Number **
e-mail Address **	** REQUIRED INFORMATION

NEW MEMBERSHIP
 RENEWAL
 Do not include my information on the published club membership list !

All members of the Palm Beach Radio Control Association are Safety Officers, and have an obligation to ensure that all members and their guests operate their aircraft in a safe manner consistent with the published PBRCA Field Rules & By-Laws, and the AMA Safety Code. All PBRCA members are duly authorized agents of the Palm Beach Radio Control Association for the purposes of ensuring that safe flying conditions exist at all times and are empowered to request anyone flying in an unsafe manner to leave the flying field.

THIS IS A TWO (2) PAGE MEMBERSHIP APPLICATION. YOU MUST COMPLETE AND SIGN THE BACK PAGE. IF APPLICANT IS UNDER 18 YEARS OF AGE THE WAIVER MUST BE SIGNED BY A PARENT OR LEGAL GUARDIAN.

Mail this form to:
PBRCA
PO Box 480392
Delray Beach, FL 33448-0392

OFFICIAL USE ONLY	<input type="checkbox"/> CASH Rec'd by: _____ Date: _____	PBRCA APPLIC
	<input type="checkbox"/> CHECK # _____ Amount Paid: _____	

Palm Beach Radio Control Association

You must have a current Academy of Model Aeronautics (AMA) membership (which provides you 2.5 million in insurance), to join the Palm Beach Radio Control Association.

MEMBERSHIP WAIVER

Palm Beach Radio Control Association (PBRCA) Complete this REQUIRED form ONLY if you are an adult ADULT (18 and Over). *If applicant is under 18 waiver must be completed and signed by parent or legal guardian.*

REQUEST, RELEASE AND WAIVER OF ALL CLAIMS AGREEMENT

I, **PRINT FIRST & LAST NAME** , hereby request that the Palm Beach Radio Control Association (PBRCA) allow me the privilege of flying radio controlled aircraft at Westervelt field. I have been informed of and I know the risks and dangers involved in the operation of radio controlled aircraft, and that unanticipated and unexpected dangers may arise during such activities and I assume all risks of injury to me and my property that may be sustained in connection with the stated activities, including, without limitation, the potential crash and loss of my aircraft and its on-board equipment and personal injury.

In consideration of the permission granted to me to participate in the stated activities, I do hereby, remise and discharge PBRCA, board members and volunteer flight instructors in the stated activities of and from all claims, loss, damages, demands, actions, and other causes of action of any sort, for injuries to person and/or property during or as a result of participating in any of the activities contemplated by this Agreement, whether such loss, damage, or injury results from the negligence of PBRCA, their officers, board members, volunteer flight instructors or from any other cause.

I represent and certify that I am over 18 years old, and that I am a member in good standing of the Academy of Model Aeronautics (AMA), or parent or legal guardian of minor applicant.

I HAVE READ, UNDERSTAND AND AGREE TO THE FOREGOING REQUEST,

IMPORTANT – Please Read: All applicants should be aware and understand that the activities involved in the flying of model airplanes and helicopters are not without some degree of hazard. Therefore it is the obligation of all members and guests to abide by AMA, PBRCA, and common sense safety guidelines to minimize these hazards and to assist the PBRCA Board in their attempt to provide a safe environment for all members and visitors. The PBRCA club, its Board of Directors, individually or collectively, will not be held liable for incidents involving injury or property damage, including, but not limited to, loss of aircraft. By submitting this membership application, you hereby acknowledge and accept these conditions.

APPLICATIONS WILL NOT BE PROCESSED UNLESS ALL REQUIRED FORMS, DOCUMENTS AND PAYMENT ARE SUBMITTED AND COMPLETED CORRECTLY.

SAFETY RULES: https://www.palmbeachrc.com/_files/ugd/e50535_48e41b68e210474aa92c5af389be5d8c.pdf

I have read the updated PBRCA "Safety Rules" and agree to abide by all the safety rules, including those rules & restrictions posted by Palm Beach County.

PRINT NAME HERE

SIGN NAME HERE

DATE

**ATTACH A COPY OF
YOUR CURRENT
AMA CARD HERE**